

Wayne County Sheriff's Department Training Newsletter

February 2012

Volume II Issue II

It is our attitude at the beginning of a difficult task which, more than anything else, will affect its successful outcome.

William James

Thoughts...

Previous newsletters have focused on assaults against law enforcement officers and, since the topic is so important, that is the focus this month. As we all know, felonious assaults against LEOs have increased in recent years. The National Law Enforcement Officers Memorial Fund reports a 20% increase in firearms related officer deaths in 2011 over 2010. There was a 16% increase in overall fatalities. On average, there are 59,000 assaults against police officers in the United States every year. I recently attended a seminar sponsored by the U. S. Department of Justice, the *Law Enforcement Officers Killed and Assaulted Program*. I am using this month's newsletter to share with you what I learned. Specifically, the Department of Justice has created a technique known as *Take A.I.M.* that is designed to mentally prepare officers to survive a deadly encounter. Please read over the technique and apply it to your own attitude and behavior when you go to work.

REMINDERS

LOOK at the training calendar by clicking <http://wcsdweb2.co.wayne.in.us/training/>

TRAINING OPPORTUNITIES

| | | |
|---------------------------|------------|-------------|
| Street Survival | Cincinnati | March 20-21 |
| Law Enforcement Intel | Lawrence | April 10-12 |
| LEOs Killed and Assaulted | Lawrence | June 27 |

If you have questions regarding training listed or an interest in attending training not found here, contact Jason Moore. Be sure to fill out a [training request form](#) for review if you would like to attend any training held outside the WCSD. Email reminders will be sent out when issues of this publication are ready to be viewed on <http://wcsdweb2.co.wayne.in.us/training>

Wayne County Sheriff's Department Training Newsletter

February 2012

Volume II Issue II

Take A. I. M.

A technique designed to help you mentally prepare to survive a deadly encounter.

(Developed by the U.S. Department of Justice)

Awareness

Image

Mind-set

Wayne County Sheriff's Department Training Newsletter

February 2012

Volume II Issue II

Awareness

- I know that I can be assaulted at anytime by anyone
- I will remain constantly aware
- I will never become complacent
- I am responsible for my own safety

Image

- I will project a neat, clean, and professional image
- I will maintain good physical condition
- I will never drop my guard
- I will convey that I am alert, prepared, and a formidable opponent

Mind-set

- I will take my training seriously
- I will adhere to safety procedures
- I will properly search and handcuff
- I will use the appropriate amount of force
- I will refuse to quit—matter what

Why I take A.I.M.

- I may not be projecting the image I think I'm projecting
- I always hope for the best, but I must be prepared for the worst
- I will protect myself, the citizens, and the community I serve
- I must survive and go home to my loved ones

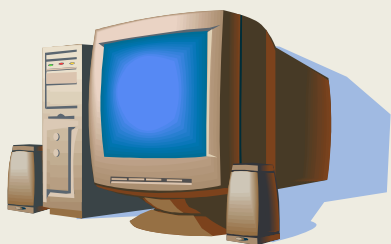
LEGAL REVIEW...

Wayne County Sheriff's Department Training Newsletter

February 2012

Volume II Issue II

BREAKING NEWS: The Supreme Court has ruled that police must obtain a search warrant to use GPS tracking. Read about it [HERE](#).



TECH TIPS & TRICKS

(Courtesy of tech guru Alan Moore)

E-Ticket use

Almost everyone has E-Ticket now. Some of you don't use it because you don't know your username or password, some because you have minor equipment issues, and some because you just don't want to and are using the prior two as excuses for not using the system. Aside from the inherent inefficiency of paper tickets, it just makes sense to use E-Ticket. Ticket writing is faster, and information that is more accurate is obtained.

For each paper ticket generated, someone has to enter that information manually three different times.

- 1) You write the ticket.
- 2) One of the WCSD secretaries copies that information into our local database.
- 3) One of the Clerks copies the information into the Judicial Tracking System.

Not only is this a waste of manpower, there are three different places something can be entered incorrectly. Compare that to E-Ticket, where often you can scan the information, and all the information is transmitted electronically to the other systems. The process of writing the ticket is not that different from a paper ticket. You enter the offender information, enter the vehicle information, and enter the charges/warnings. The system will not let you skip any required information, and even highlights what you missed.

Your tickets are automatically uploaded so you do not have to drop them off at the office.

Wayne County Sheriff's Department Training Newsletter

February 2012

Volume II Issue II

The biggest complaint about the e-ticket information is the verification of the addresses. This is not hard to simplify. You can try to come up with a valid address for tickets you write, or you can simply click on the globe, select "Wayne County" and then click on the map wherever the offense occurred. You can then type whatever you want in the "Override address" field and you are done. This is a little more cumbersome than just typing in some random information about where the offense occurred, but the information you put into the system is much more useful for analysis.

Everyone should have the training module on their PC as well. This allows you practice the entire process of writing and printing a ticket. The username and password for the training module are both "ecwstrain".

Just a reminder, that if you make an OWI arrest you should not have an E-Ticket as any part of that OWI. For instance, if you arrest an OWI and have an infraction that goes along with it, you should write a paper ticket for the infraction.